

Carpenter's Shelter

2016 Picturing Success

Meeting our Community's needs





Photo albums capture major life events and noteworthy accomplishments, helping us remember people who are special. This annual report details significant milestones and community relationships, and we are proud to share it with you, our supporters.

We are grateful for your past contributions and hope that you will continue to work alongside us, investing in our support for people who are homeless. The results described in this report confirm that, together, we are making a real impact.

As we look forward, our commitment to our mission remains constant. Our approaches to achieving it, however, reflect an evolution of thought and build upon new opportunities.

The most significant opportunity is redeveloping our property so Carpenter's Shelter can serve the community for years to come, while making affordable apartments available to nearly 100 households. Because you are special to us, we wanted you to be among the first to Know. You can find more information about this exciting initiative at www.CarpentersShelter.org/carpenters-shelter-redevelopment.

With appreciation for you and anticipation of continued service together,

Louise Roseman
Chair, Board of Directors

Shannon Steene
Executive Director



Board of Directors

Louise Roseman, **Chair**
Kerry Donley, **Vice Chair**
Jeff Creskoff, **Treasurer**
Jen Lachman, **Secretary**
Edith Bullard
Adam Cole
Lee Fifer
Neil Gillespie
Charlotte Hall
Meghan Hendy
Kathryn Kolbe
Anthony Lowe
Collin Moller
Tim O'Hara
Gregory Souchak
David G. Speck
Kim Weir



Staff Leadership

Shannon Steene
Executive Director
Mary-Parker Lamm
Deputy Director
Monise W. Quidley
Director of Development
Greg Sepper
Controller

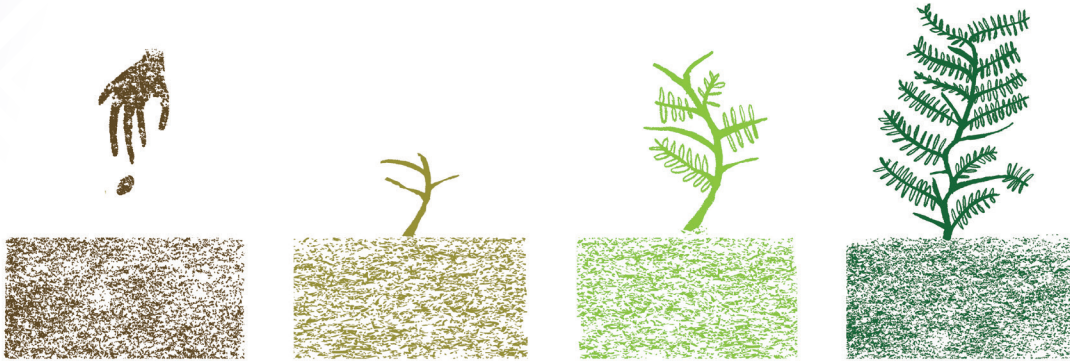
Mission

Carpenter's Shelter supports the homeless in achieving sustainable independence through shelter, guidance, education and advocacy.

Vision

To be the community leader in preventing and ending homelessness.

CARPENTER'S SHELTER — SEED VALUES



SOLUTIONS
THROUGH COLLABORATION

EMPOWERMENT

EDUCATION

DEDICATED
TO SERVING WITH RESPECT

In 2015, a team of staff members collaborated to recreate the Carpenter's Shelter's Core Values, which we now proudly refer to as the SEED values. These values embody the mission and vision of Carpenter's Shelter. Our goal is to share these values across all aspects of the organization including staff, residents, volunteers, donors, and the community as a whole.



Successfully Housing Alexandria's Families



Imagine being a single mom with five children who are counting on you and you have no place to call home. That's the position Cameron* found herself in when she and her family came to Carpenter's Shelter. Immediately upon arriving at Carpenter's, Cameron and her case manager began outlining the steps necessary for the family to overcome their homelessness. They quickly realized that even though Cameron was working at a restaurant, her inconsistent hours were not going to provide her with the steady income she needed to care for her family. Cameron worked hard to find another job and was ultimately able to secure full-time employment.

When she was not working, Cameron attended Life Skills classes at the shelter, completed a security guard certification course and applied for a scholarship from Carpenter's Education Fund to pay for a recertification



course in CPR and First Aid. With a job in place and the skills necessary to supplement her income, Cameron continued working with our Housing Locator to find a new home for her family.

During her stay at Carpenter's, Cameron was able to save more than \$3,000 despite unexpected expenses like a medical procedure and car troubles. Thanks to Rapid Re-Housing funds provided by Carpenter's Shelter and the money that she saved, Cameron was able to move her family into a new home! Cameron was also able to take beds for her children from the shelter when she moved to her new place thanks to a grant from the Phillip L. Graham Fund to replace the shelter furniture. Cameron continues to work full-time and remains connected to Carpenter's through our Community Case Management Program.

*the name has been changed to protect client confidentiality

Programs & Services



60-Bed Residential Shelter

Carpenter's Shelter is one of the largest homeless shelters in Northern Virginia, serving more than 625 homeless men, women and children each year, since 1988. Our goal is to move our residents from homeless to housed as quickly and efficiently as possible based on their Individual Housing Plan. Known for our Community Case Management program, we assist the residents with the knowledge, tools and life skills needed while in the shelter and up to a year after leaving the shelter to enhance their ability to live in the community.

625
adults & children
served in FY'16



...at the playground!

Permanent Supportive Housing Units

In July 2015, Carpenter's Shelter opened its first on-site pilot permanent supportive housing unit with plans to have four operational units by the end of 2016. The affordable Permanent Supportive Housing Units provide individuals who struggle from multiple disabilities and a myriad of barriers to gain independent living through a semi-independent living arrangement in the shelter. Permanent supportive housing residents have access to continued supportive services including free meals daily. ➔

April 2016
Carpenter's had
all four units filled

58 Average age of our
Permanent Supportive
Housing tenants

David's Place

David's Place is a clean, safe facility connected to Carpenter's Shelter, providing basic services for more than 174 individuals who are chronically homeless annually. Monday through Saturday, our clients are able to take showers; wash and dry their clothes; access television, Internet, and telephone services and locker facilities; receive housing referrals; and enjoy snacks. We are the only "day" shelter in the entire City of Alexandria.

246
adults and
children served
in 2016

Winter Shelter

Carpenter's Shelter coordinated the official Winter Shelter for the City of Alexandria in collaboration with the Alfred Street Baptist Church and the Church of St. Clements. Winter Shelter provides a safe haven from illness, injury and death during inclement weather, generally from the months of November to April.

Community Case Management

Carpenter's Continuum of Care is designed to meet clients' challenges through a range of emergency and long-term case management and support services. Our relationship with our clients does not end when they leave the shelter. Supportive services and monthly workshops are open to former residents for as long as they need.

174 individuals served in
David's Place in 2016.

.....
20% entered the
residential shelter.





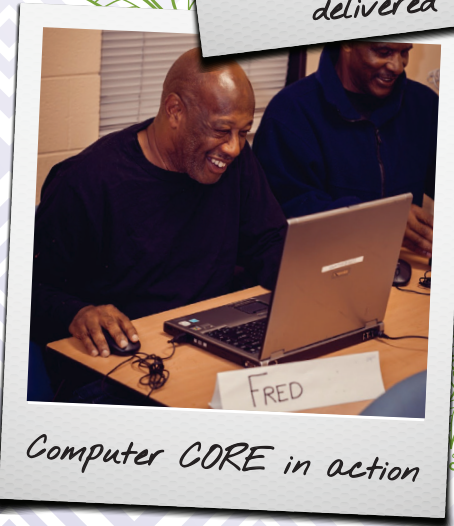
Medical care delivered here



Carpenter's Clinic

Carpenter's Clinic offers quality on-site medical care for our uninsured clients. Dedicated volunteer doctors and nurses provide free medical exams, treatments and prescriptions each week.

379
clinic
visits



Computer CORE in action

Education and Employment Program

45
life skills
workshops
held

Carpenter's Education and Employment Program helps homeless individuals increase their knowledge and achieve skills and certification to enhance their employability and thrive in the community. A variety of employment workshops teach clients to find and maintain full-time employment.





Let's eat!!

Special Events



We see the finish line

Carpenter's Cook-Off

A foodie's delight, our annual Cook-Off boasts tastings from 25 top-rated Alexandria restaurants, live music by the Alpha Dogs Blues Band, a live auction and lots of family-friendly fun at the legendary music hall The Birchmere.

Run for Shelter

The annual Run for Shelter 5K, 10K and Fun Run was held on November 22, 2015. More than 700 runners of all ages followed the certified course along Eisenhower Avenue.



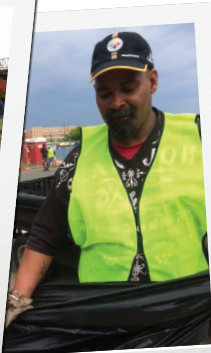
Volunteers: Our Greatest Resource

Volunteers are the very heart and soul of the Carpenter's Shelter family. Volunteers are in and around the shelter every single day and night, preparing home cooked meals, providing child care, sorting and organizing donations, running the front desk, helping residents job search and much more. No matter the activity, our volunteers offer care and support not only for our residents, but also staff. Their impact is a testament to how much good can be done with one common goal in mind.

Accomplishments



All ready to run

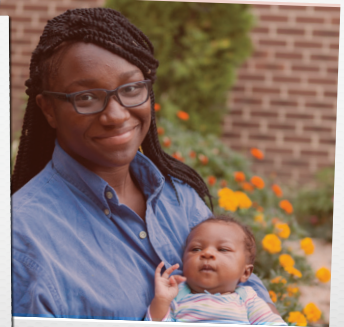


Carpenter's participates in Alexandria's Adopt-A-Block. The David's Place Neighborhood Patrol cleans the area surrounding our shelter twice a month.

Carpenter's received the 2015 Alexandria Chamber of Commerce Business Awards:
Non-Profit of the Year



Carpenter's in the Fall

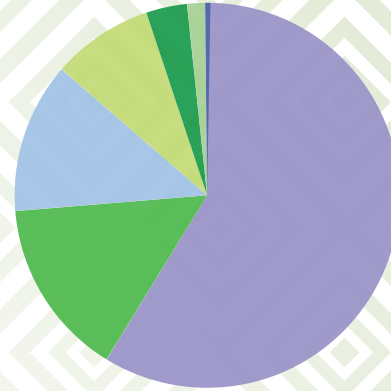


2016 Financials

Investing in Ending Homelessness

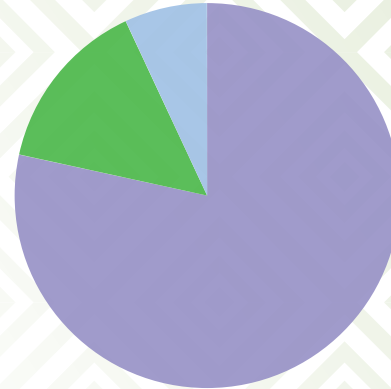
Support & Revenue: \$3,093,636

	Individuals & Organizations	59.19%
	Government Funding	15.04%
	Grants & Foundations	12.77%
	In-Kind Donations	8.6%
	Special Events	3.5%
	United Way	1.5%
	Other	0.8%



Total Expenses: \$2,044,958

	Program Services	78.43%
	Fundraising	14.62%
	Management and General	6.95%





930 North Henry Street
Alexandria, VA 22314

www.CarpentersShelter.org
(703) 548 7500

Images courtesy of Molly Riley and Carrie Keene Photography
Designed by PCI Communications